

# CIRCUIT PROTECTION

## LOW PROFILE MINI FUSES



Specifically designed to save space and weight in the latest vehicles. These fuses can be individually tested for continuity whilst installed.

Part No	Rating (Amps)	Colour	Pack Size
LP02	2	Grey	10
LP03	3	Violet	10
LP04	4	Pink	10
LP05	5	Tan	10
LP07	7.5	Brown	10
LP10	10	Red	10
LP15	15	Blue	10
LP20	20	Yellow	10
LP25	25	Clear	10
LP30	30	Green	10

## AFTERMARKET MINI BLADE FUSES



Designed to meet the highest standards of performance yet achieve budget price levels. These fuses can be individually tested for continuity whilst installed.

Part No	Rating (Amps)	Colour	Pack Sizes
FLA02	2	Grey	50, 1000
FLA03	3	Violet	50, 1000
FLA04	4	Pink	50, 1000
FLA05	5	Tan	50, 1000
FLA07	7.5	Brown	50, 1000
FLA10	10	Red	50, 1000
FLA15	15	Blue	50, 1000
FLA20	20	Yellow	50, 1000
FLA25	25	Clear	50, 1000
FLA30	30	Green	50, 1000

## MINI BLADE FUSES



This high quality product is fitted as standard by many European vehicle builders.

Part No	Rating (Amps)	Colour	Pack Sizes
FL02	2	Grey	10, 100
FL03	3	Violet	10, 100
FL04	4	Pink	10, 100
FL05	5	Tan	10, 100
FL07	7.5	Brown	10, 100
FL10	10	Red	10, 100
FL15	15	Blue	10, 100
FL20	20	Yellow	10, 100
FL25	25	Clear	10, 100
FL30	30	Green	10, 100

HELPFUL LINKS

See pages 36–45 for our range of fuse holders & fuse boxes.

# CIRCUIT PROTECTION

## AFTERMARKET BLADE FUSES

Designed to meet the highest standards of performance yet achieve budget price levels. These fuses can be individually tested for continuity whilst installed.

Part No	Rating (Amps)	Colour	Pack Sizes
FBA03	3	Violet	50, 1000
FBA04	4	Pink	50, 1000
FBA05	5	Tan	50, 1000
FBA07	7.5	Brown	50, 1000
FBA10	10	Red	50, 1000
FBA15	15	Blue	50, 1000
FBA20	20	Yellow	50, 1000
FBA25	25	Clear	50, 1000
FBA30	30	Green	50, 1000



## BLADE FUSES

This high quality product is fitted as standard by many European vehicle builders.

Part No	Rating (Amps)	Colour	Pack Sizes
FB01	1	Black	50, 1000
FB02	2	Grey	50, 1000
FB03	3	Violet	50, 1000
FB04	4	Pink	50, 1000
FB05	5	Tan	50, 1000
FB07	7.5	Brown	50, 1000
FB10	10	Red	50, 1000
FB15	15	Blue	50, 1000
FB20	20	Yellow	50, 1000
FB25	25	White	50, 1000
FB30	30	Green	50, 1000
FB40	40	Orange	50, 1000



## LED BLADE FUSES

Blade fuses fitted with an LED. The built-in LED on the top of the fuse glows when the fuse has blown.

Part No	Rating (Amps)	Colour	Pack Sizes
FBL02	2	Grey	10, 100
FBL03	3	Violet	10, 100
FBL04	4	Pink	10, 100
FBL05	5	Tan	10, 100
FBL07	7.5	Brown	10, 100
FBL10	10	Red	10, 100
FBL15	15	Blue	10, 100
FBL20	20	Yellow	10, 100
FBL25	25	Clear	10, 100
FBL30	30	Green	10, 100
FBL35	35	Turquoise	10, 100
FBL40	40	Orange	10, 100



HELPFUL LINKS

See pages 36-45 for our range of fuse holders & fuse boxes.

# CIRCUIT PROTECTION

## CIRCUIT BREAKER BLADE FUSES



Suitable for the protection of electrical systems on all types of vehicles. Each circuit breaker features a manual trip/reset button on top of the fuse.

Part No	Rating (Amps)	Colour	Pack Sizes
SCB05	5	Tan	2, 25
SCB07	7.5	Brown	2, 25
SCB10	10	Red	2, 25
SCB15	15	Blue	2, 25
SCB20	20	Yellow	2, 25
SCB25	25	White	2, 25
SCB30	30	Green	2, 25

## AFTERMARKET MAXI BLADE FUSES



Designed to meet the highest standards of performance yet achieve budget price levels.

Part No	Rating (Amps)	Colour	Pack Sizes
FMA20	20	Yellow	10, 100
FMA30	30	Green	10, 100
FMA40	40	Orange	10, 100
FMA50	50	Red	10, 100
FMA60	60	Blue	10, 100
FMA70	70	Tan	10, 100
FMA80	80	Clear	10, 100
FMA100	100	Violet	10, 100

## MAXI BLADE FUSES



Used for protecting the larger circuits up to 100 Amps. This high quality product is fitted as standard by many European vehicle builders.

Part No	Rating (Amps)	Colour	Pack Sizes
FMB20	20	Yellow	10, 100
FMB30	30	Green	10, 100
FMB40	40	Orange	10, 100
FMB50	50	Red	10, 100
FMB60	60	Blue	10, 100
FMB70	70	Light Brown	10, 100
FMB80	80	White	10, 100
FMB100	100	Violet	10, 100

HELPFUL  
LINKS

See pages 36–45 for our range of fuse holders & fuse boxes.

# CIRCUIT PROTECTION

## STRIP FUSES

Part No	Rating (Amps)	Pack Size
FS30	30	10
FS40	40	10
FS50	50	10
FS60	60	10
FS80	80	10
FS100	100	10



## MIDI FUSES

For protecting the larger circuits up to 150 amps.

Part No	Rating (Amps)	Colour	Pack Sizes
MD30	30	Orange	1, 10
MD40	40	Green	1, 10
MD50	50	Red	1, 10
MD60	60	Yellow	1, 10
MD70	70	Brown	1, 10
MD80	80	White	1, 10
MD100	100	Blue	1, 10
MD125	125	Pink	1, 10
MD150	150	Black	1, 10



## MEGA FUSES

For protecting circuits up to 500 amps.

Part No	Rating (Amps)	Colour	Pack Sizes
MF100	100	Yellow	1, 10
MF125	125	Green	1, 10
MF150	150	Orange	1, 10
MF175	175	White	1, 10
MF200	200	Blue	1, 10
MF225	225	Light Brown	1, 10
MF250	250	Pink	1, 10
MF300	300	Grey	1, 10
MF400	400	Violet	1, 10
MF500	500	Brown	1, 10



## CONTINENTAL FUSES

Part No	Rating (Amps)	Colour	Pack Sizes
FC05	5	Yellow	50, 1000
FC08	8	White	50, 1000
FC16	16	Red	50, 1000
FC25	25	Blue	50, 1000



HELPFUL LINKS

See pages 36-45 for our range of fuse holders & fuse boxes.



# CIRCUIT PROTECTION

## BLADE FUSE TESTER / EXTRACTORS



**FBT** Suitable for testing and extracting blade fuses. When the three pins are placed on the exposed metal part of the blade fuse, the green indicator light will glow if the fuse has not blown.

Individually packed.

**FBE** Suitable for extracting all types of blade fuses. Pack size 10.

## PAL FUSES (FEMALE)



Part No	Rating (Amps)	Colour	Pack Size
PF20	20	Light Blue	5
PF30	30	Pink	5
PF40	40	Green	5
PF50	50	Red	5
PF60	60	Yellow	5
PF80	80	Black	5
PF100	100	Blue	5

## PAL FUSES (MALE)



Part No	Rating (Amps)	Colour	Pack Size
PL30	30	Pink	5
PL40	40	Green	5
PL50	50	Red	5
PL60	60	Yellow	5
PL80	80	Black	5
PL100	100	Blue	5

## PAL FUSES (MALE-48)



Part No	Rating (Amps)	Colour	Pack Size
PH20	20	Light Blue	5
PH30	30	Pink	5
PH40	40	Green	5
PH50	50	Red	5
PH60	60	Yellow	5
PH70	70	Brown	5
PH80	80	Black	5
PH100	100	Blue	5

# CIRCUIT PROTECTION

## PAL FUSES (MALE-62)

Part No	Rating (Amps)	Colour	Pack Size
PS30	30	Pink	5
PS40	40	Green	5
PS50	50	Red	5
PS60	60	Yellow	5
PS80	80	Black	5
PS100	100	Blue	5



## PAL FUSES (MINI FEMALE)

Part No	Rating (Amps)	Colour	Pack Size
PM30	30	Pink	5
PM40	40	Green	5



## PAL FUSES (MINI-CLIP)

Part No	Rating (Amps)	Colour	Pack Size
PD25	25	Brown	5
PD30	30	Green	5



## PAL FUSES (CLIP)

Part No	Rating (Amps)	Colour	Pack Size
PE45	45	Red	5
PE65	65	Black	5
PE75	75	Grey	5



## PAL FUSES (J TYPE)

Part No	Rating (Amps)	Colour	Pack Size
PK20	20	Light Blue	5
PK30	30	Pink	5
PK40	40	Green	5
PK50	50	Red	5
PK60	60	Yellow	5
PK70	70	Brown	5
PK80	80	Black	5



# CIRCUIT PROTECTION

## 30MM GLASS FUSES



Flat ended glass fuses 30mm x 6.3mm.

Part No	Rating (Amps)	Pack Size
FG01	1	50
FG02	2	50
FG03	3	50
FG05	5	50
FG10	10	50
FG15	15	50
FG20	20	50
FG25	25	50
FG30	30	50
FG35	35	50
FG50	50	50

## 20MM RADIO FUSES



Radio fuses 20mm x 5mm.

Part No	Rating (Amps)	Pack Size
FGR01	1	50
FGR02	2	50
FGR03	3	50
FGR05	5	50
FGR10	10	50

## BLADE FUSE HOLDERS

FH412



FH420



Individual fuse holders, accepts blade fuses.

Part No	Rating (Amps)	Cable Conductor Cross Section (mm <sup>2</sup> )	Cable Colour	Pack Sizes
FH410	10	1.3	Black	10, 100
FH412	10	1.3	Red	10, 100
FH415	20	2.0	Black	10, 100
FH420	30	3.3	Orange	10, 100
FH425	30	3.3	Black	10, 100

FH430



FH440



Individual fuse holders, accepts blade fuses. These splash proof fuse holders are fitted with a lid to prevent ingress of water.

Part No	Rating (Amps)	Cable Conductor Cross Section (mm <sup>2</sup> )	Cable Colour	Pack Sizes
FH430	10	1.3	Black	10, 100
FH432	10	1.3	Red	10, 100
FH435	20	2.0	Black	10, 100
FH440	30	3.3	Orange	10, 100
FH445	30	3.3	Black	10, 100

# CIRCUIT PROTECTION

## BLADE FUSE HOLDERS

**FH210** Individual fuse holder. Accepts blade fuses. Several fuse holders can be clipped together to form a multiple fuse block. The cable connections are made by 2 x 6.3mm blade terminals which are pre-fitted into the base of the fuse holder.

Pack sizes: 10, 100.

**FH210C** Transparent 'Push On' cover for FH210.

Pack sizes: 10, 100.

**FH210P** Fixing plate and screw, used for securing FH210 or FH220 to a firm surface.

Pack sizes: 10, 100.

**FH213** Individual fuse holder. Accepts blade fuses. The cable connections are made by 2 x 6.3mm blade terminals.

Pack sizes: 10, 100.

**FH220** Individual fuse holder. Accepts blade fuses. Several fuse holders can be clipped together to form a multiple fuse block. The cable connections are made by 2 x 6.3mm blade terminals.

Pack sizes: 10, 100.

Individual fuse holders, accepts blade fuses. This splash proof fuse holder can be clipped together to form a multiple fuse box. The fuse holder is supplied complete with cover, silicone gasket, terminal locking bar, 2 terminals and 2 seals. See **page 41** for FH500P, FH501P and FH502P fixing plates.

Part No	Terminals To Fit Cables (mm <sup>2</sup> )	Pack Sizes
<b>FH241</b>	0.5-1.5	10, 100
<b>FH242</b>	2.0-3.0	10, 100

**FH225** Individual fuse holder. Accepts blade fuses. This easy to use fuse holder snaps onto the cable without the need to cut or terminate the cable. Rated up to 20 amps. Suitable for cables 0.65mm<sup>2</sup> to 1.30mm<sup>2</sup>.

Pack sizes: 10, 100.



## ADD A CIRCUIT BLADE FUSE HOLDER

**FH450** Add a circuit blade fuse holder. Designed to provide an additional fused feed in a standard blade fuse box.

Pack sizes: 2, 50.





# CIRCUIT PROTECTION

## LED BLADE FUSE HOLDERS



Individual fuse holders. Accepts blade fuses. The built-in LED glows when the fuse has blown. Also fitted with a lid to prevent water ingress.

Part No	Rating (Amps)	Cable Conductor Cross Section (mm <sup>2</sup> )	Cable Colour	Pack Sizes
<b>FH545</b>	20	2.0	Red	10, 100
<b>FH546</b>	30	3.0	Red	10, 100

## MINI BLADE FUSE HOLDERS



Individual fuse holders. Accepts mini blade fuses. These splash proof fuseholders are fitted with a lid to prevent ingress of water.

Part No	Rating (Amps)	Cable Conductor Cross Section (mm <sup>2</sup> )	Cable Colour	Pack Sizes
<b>FH585</b>	20	2.0	Black	10, 100
<b>FH595</b>	30	3.3	Black	10, 100

## ADD A CIRCUIT MINI BLADE FUSE HOLDER



**FH597** Add a circuit mini blade fuse holder. Designed to provide an additional fused feed in a mini blade fuse box. Pack sizes: 2, 50.

## LED MINI BLADE FUSE HOLDERS



Individual fuse holders. Accepts mini blade fuses. The built-in LED glows when the fuse has blown, also fitted with a lid to prevent water ingress.

Part No	Rating (Amps)	Cable Conductor Cross Section (mm <sup>2</sup> )	Cable Colour	Pack Sizes
<b>FH426</b>	20	2.0	Red	10, 100
<b>FH427</b>	30	3.0	Red	10, 100

## 30MM GLASS FUSE HOLDERS



Glass fuse holders. Accepts 30mm fuses.

Part No	Rating (Amps)	Cable Conductor Cross Section (mm <sup>2</sup> )	Cable Colour	Pack Sizes
<b>FH120</b>	10	1.0	Red	10, 100
<b>FH140</b>	20	2.0	Green	10, 100

Glass fuse holders. Accepts 30mm fuses. Fitted with 2 x 6.3mm terminals.

Part No	Rating (Amps)	Cable Conductor Cross Section (mm <sup>2</sup> )	Cable Colour	Pack Sizes
<b>FH130</b>	10	1.0	Red	10, 100
<b>FH150</b>	20	2.0	Green	10, 100

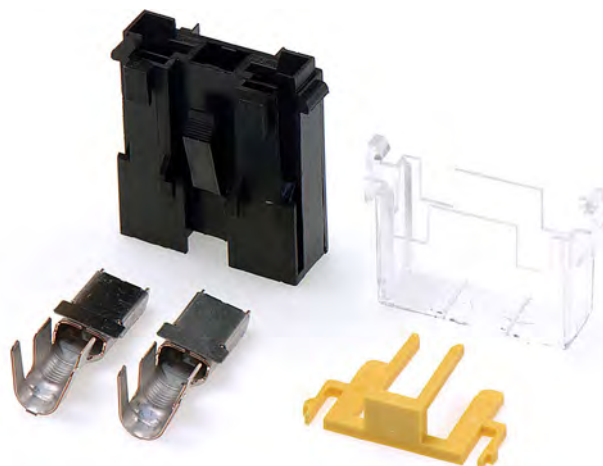
# CIRCUIT PROTECTION

## MAXI BLADE FUSE HOLDERS

Individual fuse holders. Accepts maxi blade fuses. Several fuse holders can be clipped together to form a multiple fuse block. The fuse holder is supplied complete with transparent cover, terminal locking bar and 2 terminals.

See **page 41** for FH500P, FH501P and FH502P fixing plates.

Part No	Terminals to Fit Cables (mm <sup>2</sup> )	Pack Sizes
<b>FH510</b>	1.0–2.5	1, 10
<b>FH520</b>	4.0–6.0	1, 10
<b>FH530</b>	8.0–10.0	1, 10
<b>FH540</b>	16.0	1, 10



Individual fuse holders. Accepts maxi blade fuses. These splash proof fuse holders can be clipped together to form a multiple fuse block. The fuse holder is supplied complete with cover, terminal locking bar, cable cover and 2 terminals.

See **page 41** for FH500P, FH501P and FH502P fixing plates.

Part No	Terminals to Fit Cables (mm <sup>2</sup> )	Pack Sizes
<b>FH602</b>	4.0–6.0	1, 10
<b>FH603</b>	8.0–10.0	1, 10
<b>FH604</b>	16.0	1, 10



Individual fuse holders. Accepts maxi blade fuses. These splash proof fuse holders are fitted with a lid to prevent ingress of water.

Part No	Rating (Amps)	Cable Conductor Cross Section (mm <sup>2</sup> )	Cable Colour	Pack Sizes
<b>FH620</b>	60	8.5	Red	1, 10
<b>FH621</b>	100	13.0	Red	1, 10



**FH625** Individual fuse holder. Accepts aftermarket maxi blade fuses. The fuse holder is supplied complete with 2 screws to secure the cable using ring terminals and a cover. Pack sizes: 1, 10.



**HELPFUL LINKS**

See **page 32** for our range of aftermarket maxi blade fuses.

# CIRCUIT PROTECTION

## MIDI FUSE HOLDERS

**FH560**



**FH562**



**FH560** Individual fuse holder. Accepts midi fuses and strip fuses. The cable connections are made using the 2 x 5mm studs. Maximum cable size for this unit is 16mm<sup>2</sup>. Pack sizes: 1, 10.

**FH562** Individual fuse holder. Accepts midi fuses. The cable connections are made using the 2 x 5mm studs. Multiple fuse holders can be clipped together to form a fuse block. Pack sizes: 1, 10.

## MEGA FUSE HOLDERS

**FH567**



**FH569**



Individual fuse holder, accepts mega fuses. The fuse holder is supplied complete with 2 terminals for crimping onto the cable.

Part No	Terminals to Fit Cables (mm <sup>2</sup> )	Pack Sizes
<b>FH567</b>	10-20	1, 10
<b>FH568</b>	25-35	1, 10

**FH569** Individual fuse holder. Accepts mega fuses. The cable connections are made using the 2 x 8mm studs. The fuse holder is fixed onto a firm surface using fixing points located at the ends of the unit. Multiple fuse holders can be clipped together to form a fuse block. Pack sizes: 1, 10.

## CONTINENTAL FUSE HOLDER



**FH310** Individual fuse holder. Accepts continental fuses. Supplied with 8 amp fuse. The cable connections are made using the 2 screw down fittings at the ends of the fuse holder. Pack sizes: 10, 100.

# CIRCUIT PROTECTION

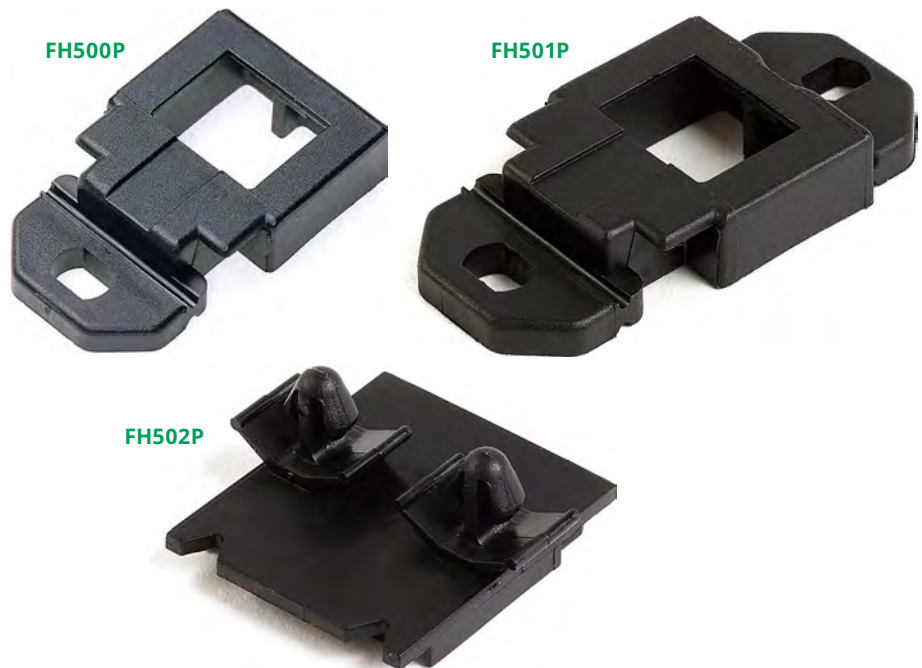
## FIXING PLATES

**FH500P** Fixing plate for securing a variety of fuse holders and relay holders to a firm surface.  
Pack sizes: 10, 100.

**FH501P** Fixing plate for securing a variety of fuse holders and relay holders to a firm surface.  
Pack sizes: 10, 100.

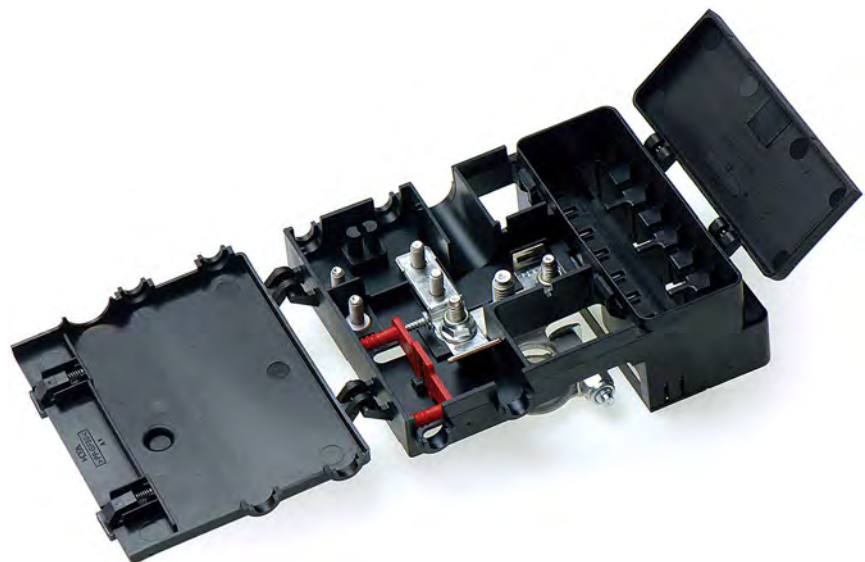
**FH502P** Fixing plate for securing a variety of fuse holders and relay holders to a firm surface.  
Pack sizes: 10, 100.

All fixing plates are compatible with FH241, FH242, FH510, FH520, FH530, FH540, FH602, FH603 and FH604.



## BATTERY DISTRIBUTION FUSE BOX

**BDB1** Battery distribution fuse box. Incorporates an inbuilt battery terminal. The box can be fitted with 8 maxi blade fuses and 2 midi fuses. BDB1 is supplied complete with 4 x 2 way housings and 8 terminals. Suitable for cable sizes 4.0mm<sup>2</sup> to 6.0mm<sup>2</sup>. The main power cable fits onto an 8mm stud and the two midi fuses connect to 2 x 5mm studs. Individually packed.





# CIRCUIT PROTECTION

## MODULAR FUSE AND RELAY BOXES

---



**FH355** Cover for 5 way module frame.  
Individually packed.



**FH345** 5 way module frame. Accepts a combination of any 5 modules.  
Individually packed.



**FH350** Cover for 4 way module frame.  
Individually packed.



**FH340** 4 way module frame. Accepts a combination of any 4 modules.  
Individually packed.



**FH330** Double module cover with position for fuse extractor (FBE) see **page 34**.  
Individually packed.



**FH317** Pair of double module brackets. Accepts any 2 modules.  
Packed in pairs.



**FH505** Single module cover.  
Individually packed.



**FH337** Pair of single module brackets. Accepts any one of the 7 modules.  
Packed in pairs.



**FH360** Mini blade fuse box. Accepts 20 mini blade fuses. This fuse box can be mounted using any of the modular frames above. Supplied complete with terminal locking bars and 40 terminals for crimping cables 1.0mm<sup>2</sup> to 2.0mm<sup>2</sup>.  
Individually packed.

**FH360H** Mini Blade fuse housing with locking bar only.  
Pack size: 10.



# CIRCUIT PROTECTION

## MODULAR FUSE AND RELAY BOXES

**FH365** Mini blade fuse and micro relay box. Accepts 6 mini blade fuses and 4 micro relays. This fuse / relay box can be mounted using any of our modular frames. Supplied complete with terminal locking bars, 12 terminals for crimping cables 1.0mm<sup>2</sup> to 2.0mm<sup>2</sup> for the mini blade fuses and 20 terminals for the micro relays. Individually packed.

**FH365H** Mini blade fuse and micro relay housing with locking bars only.  
Pack size: 10.

**FH370** Micro relay box. Accepts 6 micro relays. This relay box can be mounted using any of our modular frames. Supplied complete with terminal locking bars and 30 terminals suitable for a variety of micro relays. Individually packed.

**FH370H** Micro relay housing with locking bars only.  
Pack size: 10.

**FH375** Mini relay and high performance relay box. Accepts 1 mini relay and 1 high performance relay. This relay box can be mounted using any of our modular frames. Supplied complete with terminal locking bars and 15 terminals suitable for both relay types. Individually packed.

**FH375H** Mini relay and high performance relay housing with locking bars only.  
Pack size: 10.

**FH390** Mini relay box. Accepts 2 mini relays. This relay box can be mounted using any of our modular frames. Supplied complete with terminal locking bars and 18 terminals suitable for a variety of mini relays. Individually packed.

**FH390H** Mini relay housing with locking bars only.  
Pack size: 10.

**FH385** Mini blade fuse and high performance relay box. Accepts 10 mini blade fuses and 1 high performance relay. This relay box can be mounted using any of our modular frames. Supplied complete with terminal locking bars, 20 terminals for crimping cables 1.0mm<sup>2</sup> to 2.0mm<sup>2</sup> for the mini blade fuses and 6 terminals for the high performance relay. Individually packed.

**FH385H** Mini blade fuse and high performance relay housing with locking bars only.  
Pack size: 10.

**FH380** Maxi blade fuse box. Accepts 6 maxi blade fuses. This fuse box can be mounted using any of our modular frames. Supplied complete with terminal locking bars, 6 terminals for crimping cables 4.0mm<sup>2</sup> to 6.0mm<sup>2</sup> and a common feed terminal. Individually packed.

**FH380H** Maxi blade fuse housing with locking bars only.  
Pack size: 10.



# CIRCUIT PROTECTION

## BLADE FUSE BOXES



Blade fuse boxes complete with transparent cover and terminal locking bar. The cable connections are made using the 6.3mm male blade terminals which are fitted on the underside of the fuse box.

Part No	No of Fuses	Male Blade Terminals Fitted (mm)	Dimensions H x W x D (mm)	Pack Sizes
FBB4U	4	8 x 6.3	58 x 65 x 26	1, 100, 500
FBB6U	6	12 x 6.3	58 x 85 x 26	1, 50, 500



**FBB8U** 8 way blade fuse box complete with transparent cover and gasket which is designed to be inserted into a panel. The cable connections are made using the 16 x 6.3mm male blade terminals which are fitted on to the underside of the fuse box. Dimensions 42mm (H) x 115mm (W) x 30mm (D).  
Pack sizes: 1, 50, 300.



Blade fuse boxes complete with transparent cover and gasket. The cable connections are made using the 6.3mm male blade terminals which are fitted on the sides of the fuse box.

Part No	No of Fuses	Male Blade Terminals Fitted (mm)	Dimensions H x W x D (mm)	Pack Sizes
FBB4T	4	8 x 6.3	36 x 80 x 29	1, 100
FBB6T	6	12 x 6.3	36 x 100 x 29	1, 50
FBB8T	8	16 x 6.3	36 x 120 x 29	1, 50



**FBB16U** 16 way blade fuse box complete with transparent cover, gasket and terminal locking bar. Supplied with 32 terminals for crimping cables 1.0mm<sup>2</sup> to 2.5mm<sup>2</sup>. The female push-on terminals provided are crimped onto the cables, these are then inserted underneath the fuse box and are firmly held in place using the terminal locking bar. This fuse box can be clipped together with another box or boxes to form a 32 or 48 way unit. FBB16U can also be clipped together with the 4 and 7 way relay boxes (RB4U and RB7U) to form a single integrated unit. Dimensions 64mm (H) x 135mm (W) x 42mm (D). Individually packed.

# CIRCUIT PROTECTION

## BLADE FUSE BOX

**FBB6M** 6 way blade fuse box complete with a transparent screw down cover. This fuse box contains 2 positive circuits and 1 negative circuit. Max 30 Amps per output.

Max 100 Amps per box.

Dimensions 55mm (H) x 93mm (W) x 123mm (L).

Technical data sheet available on request.

Individually packed.



## LED BLADE FUSE BOXES

LED blade fuse box complete with transparent cover. Consists of 1 x 5mm positive power input stud which feeds each of the blade fuses. Each fuse has a 6.3mm male blade terminal and a red LED indicator light next to it that glows when the fuse has blown. The boxes can be fixed to a firm surface using the mounting holes.

Part No	No of Fuses	Male Blade Terminals Fitted (mm)	Dimensions H x W x D (mm)	Pack Size
<b>FBB4L</b>	4	4 x 6.3	35 x 45 x 85	1
<b>FBB6L</b>	6	6 x 6.3	35 x 65 x 85	1
<b>FBB10L</b>	10	10 x 6.3	35 x 95 x 85	1



## RELAY BOXES

Relay boxes complete with transparent cover, gasket and locking bars. Supplied with terminals for crimping cables 1.0mm<sup>2</sup> to 2.5mm<sup>2</sup>. The female push-on terminals provided are inserted underneath the relay box and are firmly held in place using the locking bars. Both boxes can be clipped together along with the 16 way fuse box (FBB16U on [page 44](#)) to form a single integrated unit.

Individually packed.

Part No	No of Relays	Suitable for	Dimensions H x W x D (mm)
<b>RB4U</b>	4	Mini Relays	64 x 131 x 42
<b>RB7U</b>	7	Micro Relays	64 x 131 x 42





# CIRCUIT PROTECTION

## SWITCHABLE SURFACE MOUNT CIRCUIT BREAKERS

**NEW  
RANGE**



Typically used in auxiliary and accessory circuits in trucks, buses, RV's and marine systems.

Sealed for engine compartment and bilge area applications.

Compliances: SAE J1171 (ignition protected), SAE J1625.

Ingress Protection: IP67.

Voltage: 48Vdc.

Interrupt Rating: 3000A @ 30Vdc.

Operating Temp: -32°C to 82°C

Storage Temp: -34°C to 149°C

Material: Black UL-rated 94V0 thermoset plastic.

Protective stud insulators included.

Part No	Rating (Amps)	Stud Size	Pack Sizes
<b>HCB50S</b>	50	1/4"	1, 10
<b>HCB60S</b>	60	1/4"	1, 10
<b>HCB80S</b>	80	1/4"	1, 10
<b>HCB100S</b>	100	1/4"	1, 10
<b>HCB150S</b>	150	1/4"	1, 10
<b>HCB200S</b>	200	3/8"	1, 10

## SWITCHABLE PANEL MOUNT CIRCUIT BREAKERS

**NEW  
RANGE**



Typically used in auxiliary and accessory circuits in trucks, buses, RV's and marine systems.

Sealed for engine compartment and bilge area applications.

Compliances: SAE J1171 (ignition protected), SAE J1625.

Ingress Protection: IP67.

Voltage: 48Vdc.

Interrupt Rating: 3000A @ 30Vdc.

Operating Temp: -32°C to 82°C

Storage Temp: -34°C to 149°C

Material: Black UL-rated 94V0 thermoset plastic.

Part No	Rating (Amps)	Stud Size	Pack Sizes
<b>HCB50P</b>	50	1/4"	1, 10
<b>HCB80P</b>	80	1/4"	1, 10
<b>HCB100P</b>	100	1/4"	1, 10